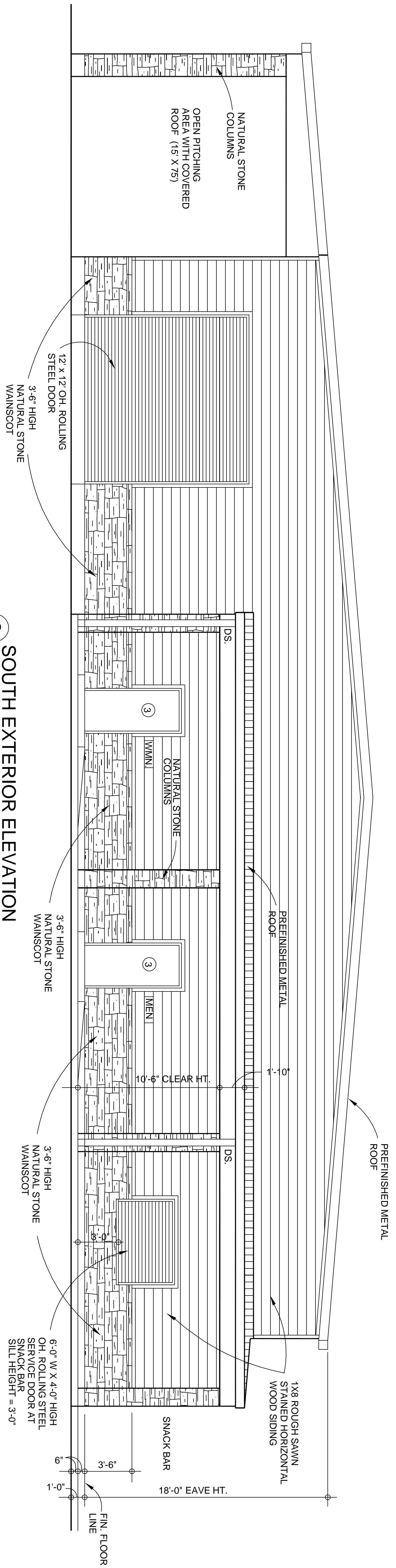
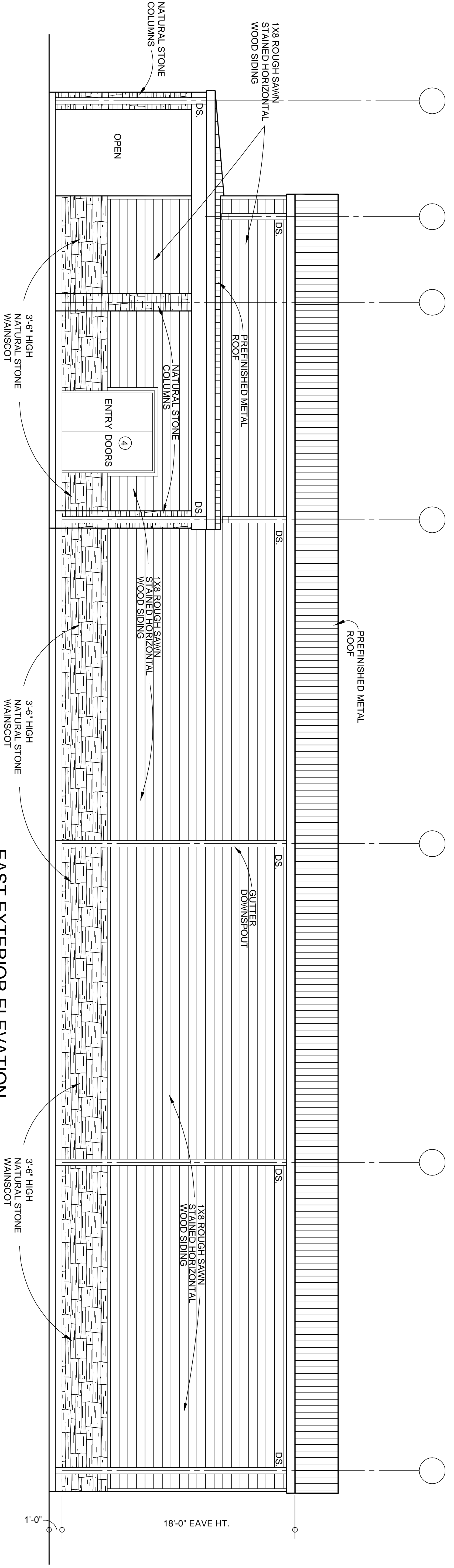


12  
1

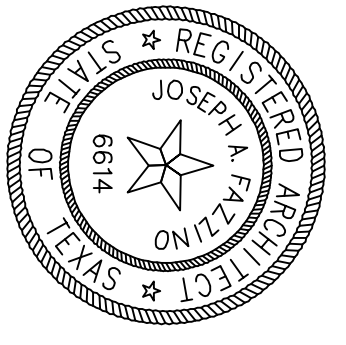
12  
1



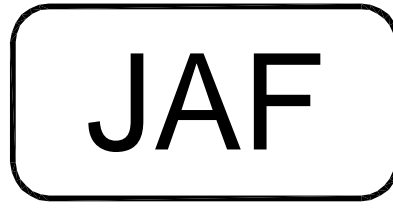
2 SOUTH EXTERIOR ELEVATION  
SCALE: 1/4" = 1'-0"



1 EAST EXTERIOR ELEVATION  
SCALE: 1/4" = 1'-0"



J. A. FAZZINO ARCHITECTS  
A. I. A.  
P.O. BOX 10020 HOUSTON, TEXAS  
(713) 686-1986 77206-0020



T. Y. S. M. G. BATTING CAGES  
BUILDING AT 19717 STUEBNER  
AIRLINE RD. • SPRING, TEXAS

DESIGNED BY J. A. F.  
CHECKED BY J. A. F.  
DATE 5-19-14  
PROJECT NO. 14-05-1

A-3  
OF